

AMP/Pirelli Fiber Optic Cable



AMP/Pirelli offers a complete range of fiber optic communication cables for customer premises cabling to support voice, video and high-speed data transmission applications. Cables are designed for all segments of the premises network and are designed and tested to exceed the requirements of ANSI/TIA/EIA-568-B.3, ISO 11801 and other industry standards. Made with Corning® InfiniCor™ and singlemode fiber, AMP/Pirelli cables support LED applications and laser applications using VCSELs and long wavelength lasers. Gigabit Ethernet operations are guaranteed up to 550 meters for 62.5/125 multimode fiber and up to 600 meters on 50/125 multimode fiber. Interconnect, distribution, indoor/outdoor and outside plant cables are all covered by the AMP NETCONNECT 25-year warranty. Together with the AMP NETCONNECT Solarum line of connectors, patch panels, cable assemblies and enclosures, complete high performance optical fiber networks are ready to be installed. Additional cable options and products not listed in this brochure are available.

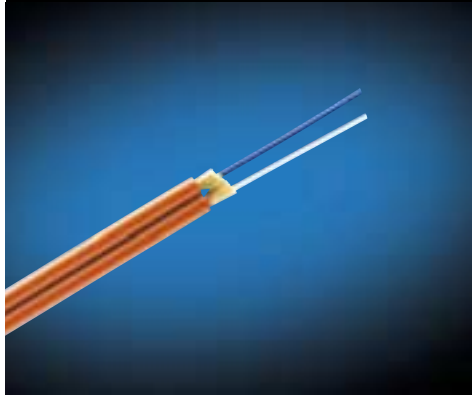
- Singlemode, multimode 50/125 μ m, multimode 62.5/125 μ m
- Hybrid constructions (SM and MM fiber) available
- Exceeds ANSI/TIA/EIA-568-B.3
- Tested to support laser operation, including VCSELs and long-wavelength lasers
- Extended lengths for Gigabit Ethernet guaranteed
- Interconnect, distribution, indoor/outdoor and outside plant cables
- Work Area, Horizontal, Building Backbone and Campus Backbone Cables
- Outside plant and Indoor/Outdoor cables feature dry water-blocking technology
- All-dielectric and armored cables available
- 25-year warranty



Manufactured by
PIRELLI



Interconnect Cables



INTERCONNECT (WORK AREA / HORIZONTAL)

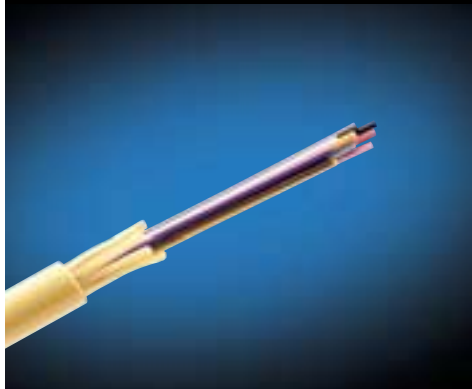
Designed for connectorized use in jumpers and pigtailed, but also suitable for work area and horizontal cabling. Large variety of custom options can satisfy even the most demanding applications.

Cable description	900µm tight-buffered fibers surrounded by dielectric strength members and a protective outer jacket.
Flame ratings	Plenum (OFNP), Riser (OFNR), and Riser LSZH (Low Smoke Zero Halogen)
Fiber counts	Simplex (1) - Duplex (2) - Zipcord (2) Quad (4)
Fiber types	Singlemode, Multimode (50/125µm), Multimode (62.5/125µm)

Cable Type	Solarum Singlemode	Solarum 50/125 Multimode	62.5/125 Multimode
Simplex	001SEHNTAHH_SY	001MBHNTAHH_SN	001LBHNTAHH_SN
Zipcord (2 fiber)	002SEHNTAHH_ZY	002MBHNTAHH_ZN	002LBHNTAHH_ZN
DUALAN (2 fiber)	002SEHNTAHJ_NY	002MBHNTAHJ_NN	002LBHNTAHJ_NN
QUADLAN (4 fiber)	004SEHNTAHJ_NY	004MBHNTAHJ_NN	004LBHNTAHJ_NN

Fill in blank with "R" for riser (OFNR) cables, or "P" for plenum (OFNP) cables.

Distribution Cables—6 to 12 Fibers



DISTRIBUTION (HORIZONTAL / BUILDING BACKBONE)

Designed for routing between communications closets, intrabuilding backbones and connectorized communication cables. Ideal for low fiber count networks and applications.

Cable description	900µm tight-buffered fibers surrounded by dielectric strength members and a protective outer jacket.
Flame ratings	Plenum (OFNP), Riser (OFNR)
Fiber counts	6 - 12
Fiber types	Singlemode, Multimode (50/125µm), Multimode (62.5/125µm)

Cable Type	Solarum Singlemode	Solarum 50/125 Multimode	62.5/125 Multimode
Distribution (6 Fiber)	006SEHNTATJ_NY	006MBHNTATJ_NN	006LBHNTATJ_NN
Distribution (12 Fiber)	012SEHNTATJ_NY	012MBHNTATJ_NN	012LBHNTATJ_NN

Fill in blank with "R" for riser (OFNR) cables, or "P" for plenum (OFNP) cables.

Distribution Cables—24 to 72 Fibers



DISTRIBUTION (BUILDING BACKBONE)

Designed for intrabuilding backbones and connectorized communication cables. Cable designs are optimized for maximum flexibility.

Cable description	Subunits bound around a dielectric central strength member and covered with an outer jacket. Each subunit consists of 900µm tight-buffered fibers, dielectric strength members and a protective jacket.
Flame ratings	Plenum (OFNP), Riser (OFNR)
Fiber counts	24 - 72
Fiber types	Singlemode, Multimode (50/125µm), Multimode (62.5/125µm)

Cable Type	Solarum Singlemode	Solarum 50/125 Multimode	62.5/125 Multimode
Distribution (24 Fiber)	024SE2TTATJ_VY	024MB2TTATJ_VN	024LB2TTATJ_VN
Distribution (36 Fiber)	036SE66TATJ_NY	036MB66TATJ_NN	036LB66TATJ_NN
Distribution (48 Fiber)	048SE4TTATJ_NY	048MB4TTATJ_NN	048LB4TTATJ_NN
Distribution (72 Fiber)	072SE6TTATJ_NY	072MB6TTATJ_NN	072LB6TTATJ_NN

Fill in blank with "R" for riser (OFNR) cables, or "P" for plenum (OFNP) cables.

Indoor/Outdoor Cables—Central Loose Tube



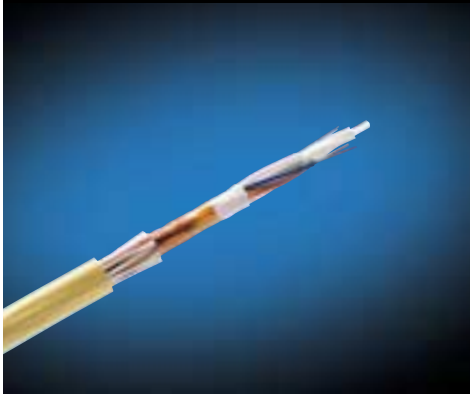
INDOOR/OUTDOOR (BUILDING BACKBONE / CAMPUS BACKBONE)

Indoor/Outdoor cable designed to save space, save time and simplify fiber management by eliminating the need for splicing when entering buildings. Extremely flexible and economical cable that is ideal for low fiber count applications.

Cable description	Strain-free fibers in a central loose tube surrounded by dry water blocking and dielectric strength members and a protective outer jacket.
Flame rating	Riser (OFNR)
Fiber counts	2 - 12
Fiber types	Singlemode, Multimode (50/125µm), Multimode (62.5/125µm)

Cable Type	Solarum Singlemode	Solarum 50/125 Multimode	62.5/125 Multimode
Indoor/Outdoor (4 fiber)	004SCS1LABNRJB	004MBS1LABNRJB	004LBS1LABNRJB
Indoor/Outdoor (6 fiber)	006SCS1LABNRJB	006MBS1LABNRJB	006LBS1LABNRJB
Indoor/Outdoor (12 fiber)	012SCS1LABNRJB	012MBS1LABNRJB	012LBS1LABNRJB

Indoor/Outdoor Cables—Stranded Loose Tube



INDOOR/OUTDOOR (BUILDING BACKBONE / CAMPUS BACKBONE)

Indoor/Outdoor cable designed to save space and time and simplify fiber storage and management by eliminating the need for splicing when entering buildings.

Cable description	Strain-free fibers in loose tubes stranded around a dielectric strength member and then surrounded by dry water blocking tapes and strength members, flame barrier tapes and a protective outer jacket.
Flame rating	Riser (OFNR)
Fiber counts	4 - 144
Fiber types	Singlemode, Multimode (50/125µm), Multimode (62.5/125µm)

Cable Type	Solarum Singlemode	Solarum 50/125 Multimode	62.5/125 Multimode
Indoor/Outdoor (24 Fiber)	024SCS1LAFERJA	024MBS1LAFERJA	024LBS1LAFERJA
Indoor/Outdoor (48 Fiber)	048SCS1LAFERJA	048MBS1LAFERJA	048LBS1LAFERJA
Indoor/Outdoor (72 Fiber)	072SCS1LAFERJA	072MBS1LAFERJA	072LBS1LAFERJA

Outside Plant Cables

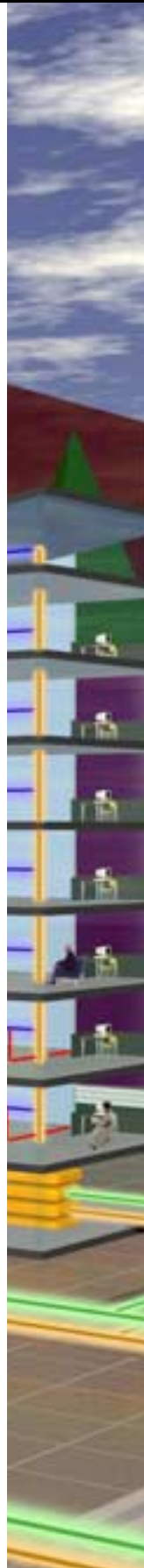


OUTSIDE PLANT (CAMPUS BACKBONE)

Ideal for campus-type environments or for long runs between buildings. Several cable design options provide the flexibility to satisfy the needs of even the most demanding network solutions.

Cable description	Central loose tube or stranded loose tube armored or unarmored designs available. All designs use dry water blocking technology and extremely flexible buffer tube material.
Fiber counts	2 - 144 (Higher fiber counts available)
Fiber types	Singlemode, Multimode (50/125µm), Multimode (62.5/125µm)

Cable Type	Solarum Singlemode	Solarum 50/125 Multimode	62.5/125 Multimode
All-Dielectric (24 Fiber)	024SCS1LAFESJA	024MBS1LAFESJA	024LBS1LAFESJA
All-Dielectric (48 Fiber)	048SCS1LAFESJA	048MBS1LAFESJA	048LBS1LAFESJA
All-Dielectric (72 Fiber)	072SCS1LAFESJA	072MBS1LAFESJA	072LBS1LAFESJA
All-Dielectric (144 Fiber)	144SCS1LAFESJA	144MBS1LAFESJA	144LBS1LAFESJA



AMP/Pirelli Fiber Optic Cable

AMP/Pirelli offers a complete line of optical fiber cables for customer premises networks. Information on other cable designs and fiber counts can be obtained by calling AMP NETCONNECT Customer Service at 1-800-553-0938, or Pirelli Customer Service at 1-800-669-0808.

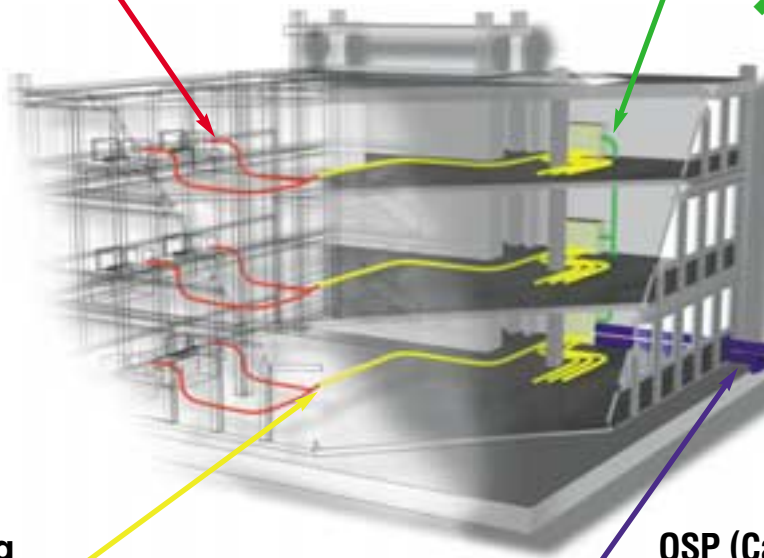
Local Area Networks

Work Area Cabling

- ◆ INTERCONNECT CABLES

Building Backbone

- ◆ DISTRIBUTION CABLES
- ◆ INDOOR / OUTDOOR CABLES



Horizontal Cabling

- ◆ INTERCONNECT CABLES
- ◆ DISTRIBUTION CABLES

OSP (Campus Backbone)

- ◆ INDOOR / OUTDOOR CABLES
- ◆ OUTSIDE PLANT CABLES

AMP/Pirelli Fiber Optic Cable provides a universal media for several communications services and represents state-of-the-art support for a wide range of Local Area Network applications like:

- | | |
|-------------------------|--------------------|
| ■ Ethernet | ■ Fast Ethernet |
| ■ Token-Ring | ■ SONET |
| ■ High Speed Token-Ring | ■ ATM |
| ■ FDDI | ■ Gigabit Ethernet |

In the U.S. 1-800-553-0938
Canada 905-475-6222
Mexico 525-729-0400
South and Central Americas 54-11-4733-2200
www.ampnetconnect.com
e-mail: networking.help@tycoelectronics.com

©Copyright 2000 Tyco Electronics Corporation. All rights reserved.
AMP, AMP NETCONNECT, NETCONNECT, Solarum and Tyco are trademarks.
Pirelli is a trademark of the PIRELLI Corporation of North America. InfiniCor™ is a trademark of Corning.
1307970-10M-LHC-HA-5/00 Printed in USA

tyco
ELECTRONICS

AMP
NETCONNECT

